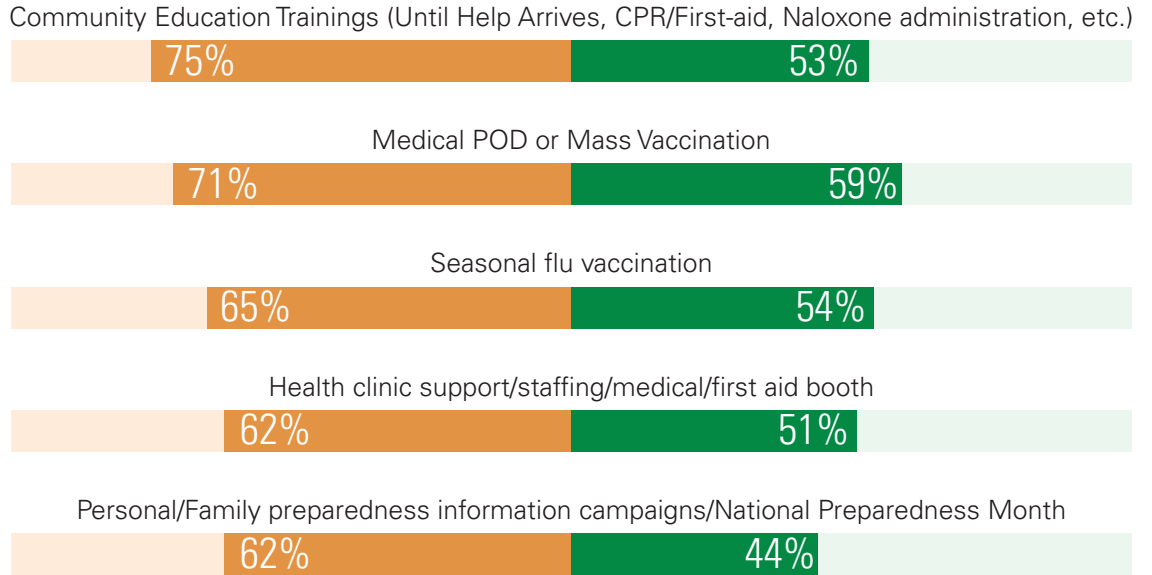


MRC Unit Capabilities

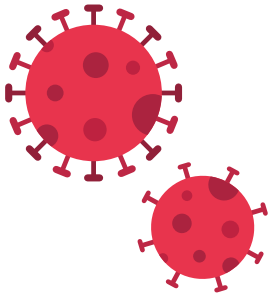


DEVELOPED/ADAPTED

DEPLOYED



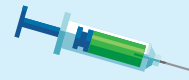
COVID-19



96%

of respondents deployed to COVID-19 between Jan 1, 2020–Dec 31, 2022

TOP 3 MISSION SETS DEVELOPED



38% Medical POD or mass vaccination



30% Clinic/Drive-Through COVID-19 Testing/Vaccinations



23% General Shelter Support (Human and/or Animal)



TOP COVID-19 CAPABILITIES DEPLOYED

- Clinic or Drive-Through COVID-19 Testing/Vaccination
- Mass Vaccination or Points of Dispensing (POD)
- PPE Distribution



SYSTEMS USED TO ALERT, ACTIVATE, AND DEPLOY VOLUNTEERS DURING COVID-19 RESPONSE

- 41% statewide ESAR-VHP
- 37% "other" (email, calls, text, Google Sheets, and ReadyOP)
- 26% Sign-Up Platforms (e.g. SignUpGenius)



BARRIERS TO DEPLOYING MRC VOLUNTEERS DURING COVID-19 RESPONSE

- 41% Exposure to risk factors for volunteers
- 27% Not enough staff
- 25% Inconsistent guidance from state government
- 24% MRC replaced by other agencies or contracted staff